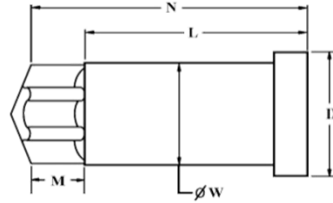
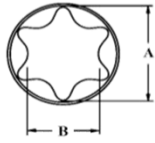




'T' and Star Drive Systems



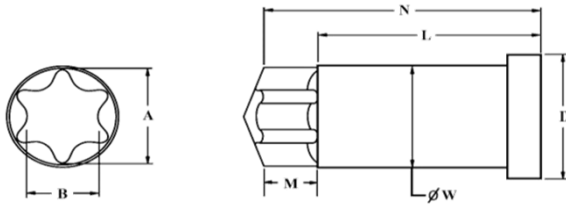
Size 5				
Product No	M Ref. inch/mm	A inch/mm	B inch/mm	L inch/mm
05-250	.031/0.78	.059/1.49	.043/1.09	0.375/9.525
05-251	.017/0.43	.059/1.49	.043/1.09	0.375/9.525
05-252	.025/0.63	.059/1.49	.043/1.09	0.375/9.525

Size 6				
Product No	M Ref. inch/mm	A inch/mm	B inch/mm	L inch/mm
06-250	.041/1.04	.070/1.77	.050/1.29	0.375/9.525
06-251	.022/0.55	.070/1.77	.050/1.29	0.375/9.525
06-252	.030/0.76	.070/1.77	.050/1.29	0.375/9.525
06-253	.033/0.83	.070/1.77	.050/1.29	0.375/9.525

Size 7				
Product No	M Ref. inch/mm	A inch/mm	B inch/mm	L inch/mm
07-250	.033/0.83	0.082/2.095	0.059/1.521	0.375/9.525
07-251	.038/0.96	0.082/2.095	0.059/1.521	0.375/9.525
07-252	.043/1.09	0.082/2.095	0.059/1.521	0.375/9.525
07-253	.030/0.76	0.082/2.095	0.059/1.521	0.375/9.525
07-254	.025/1.63	0.082/2.095	0.059/1.521	0.375/9.525
07-255	.035/0.88	0.082/2.095	0.059/1.521	0.375/9.525



'T' and Star Drive Systems



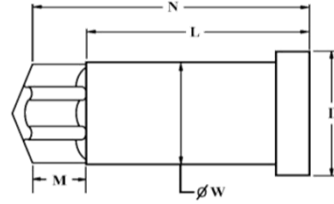
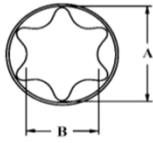
Size 8				
Product No	M Ref. inch/mm	A inch/mm	B inch/mm	L inch/mm
08-250	.033/0.83	.095/2.41	0.069/1.75	0.375/9.525
08-251	.041/1.04	.095/2.41	0.069/1.75	0.375/9.525
08-252	.051/1.29	.095/2.41	0.069/1.75	0.375/9.525
08-253	.038/0.96	.095/2.41	0.069/1.75	0.375/9.525
08-254	.030/0.76	.095/2.41	0.069/1.75	0.375/9.525
08-255	.028/0.71	.095/2.41	0.069/1.75	0.375/9.525
08-256	.043/1.09	.095/2.41	0.069/1.75	0.375/9.525
08-257	.035/0.88	.095/2.41	0.069/1.75	0.375/9.525

Size 9				
Product No	M Ref. inch/mm	A inch/mm	B inch/mm	L inch/mm
09-250	.040/1.01	0.102/2.60	0.074/1.88	0.375/9.525
09-251	.055/1.39	0.102/2.60	0.074/1.88	0.375/9.525
09-252	.046/1.16	0.102/2.60	0.074/1.88	0.375/9.525
09-253	.037/0.94	0.102/2.60	0.074/1.88	0.375/9.525

Size 10				
Product No	M Ref. inch/mm	A inch/mm	B inch/mm	L inch/mm
10-250	.050/1.27	0.111/2.81	0.081/2.05	0.629/15.976
10-251	.040/1.01	0.111/2.81	0.081/2.05	0.629/15.976
10-252	.060/1.52	0.111/2.81	0.081/2.05	0.629/15.976
10-253	.035/0.88	0.111/2.81	0.081/2.05	0.629/15.976
10-254	.045/1.14	0.111/2.81	0.081/2.05	0.629/15.976
10-255	.030/0.76	0.111/2.81	0.081/2.05	0.629/15.976
10-256	.033/0.84	0.111/2.81	0.081/2.05	0.629/15.976



'T' and Star Drive Systems



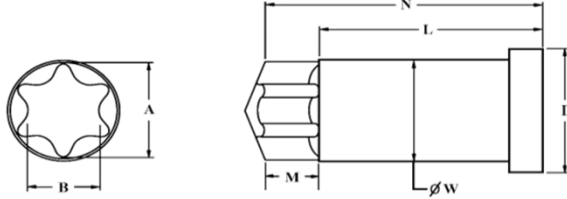
Size 15				
Product No	M Ref. inch/mm	A inch/mm	B inch/mm	L inch/mm
15-250	.060/1.52	0.132/3.35	0.096/2.43	0.629/15.976
15-251	.045/1.14	0.132/3.35	0.096/2.43	0.629/15.976
15-252	.070/1.77	0.132/3.35	0.096/2.43	0.629/15.976
15-253	.035/0.88	0.132/3.35	0.096/2.43	0.629/15.976
15-254	.050/1.27	0.132/3.35	0.096/2.43	0.629/15.976
15-255	.033/0.84	0.132/3.35	0.096/2.43	0.629/15.976
15-256	.041/1.04	0.132/3.35	0.096/2.43	0.629/15.976

Size 20				
Product No	M Ref. inch/mm	A inch/mm	B inch/mm	L inch/mm
20-250	.089/2.26	0.155/3.93	0.112/2.85	0.629/15.976
20-251	.065/1.65	0.155/3.93	0.112/2.85	0.629/15.976
20-252	.080/2.03	0.155/3.93	0.112/2.85	0.629/15.976
20-253	.050/1.27	0.155/3.93	0.112/2.85	0.629/15.976
20-254	.038/0.96	0.155/3.93	0.112/2.85	0.629/15.976
20-255	.060/1.52	0.155/3.93	0.112/2.85	0.629/15.976
20-256	.056/1.42	0.155/3.93	0.112/2.85	0.629/15.976
20-257	.036/0.92	0.155/3.93	0.112/2.85	0.629/15.976
20-258	.045/1.14	0.155/3.93	0.112/2.85	0.629/15.976

Size 25				
Product No	M Ref. inch/mm	A inch/mm	B inch/mm	L inch/mm
25-250	.115/2.92	0.178/4.53	0.129/3.27	0.632/16.053
25-251	.065/1.65	0.178/4.53	0.129/3.27	0.632/16.053
25-252	.090/2.28	0.178/4.53	0.129/3.27	0.632/16.053
25-253	.055/1.39	0.178/4.53	0.129/3.27	0.632/16.053
25-254	.075/1.90	0.178/4.53	0.129/3.27	0.632/16.053
25-255	.044/1.12	0.178/4.53	0.129/3.27	0.632/16.053
25-256	.060/1.52	0.178/4.53	0.129/3.27	0.632/16.053



'T' and Star Drive Systems

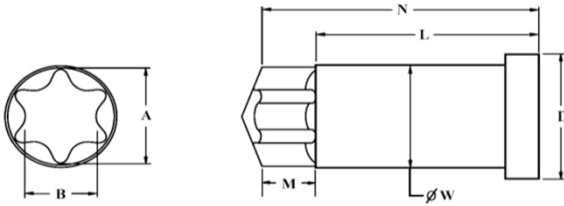


Size 27				
Product No	M Ref. inch/mm	A inch/mm	B inch/mm	L inch/mm
27-250	.120/3.04	0.200/5.09	0.144/3.67	0.632/16.053
27-251	.065/1.65	0.200/5.09	0.144/3.67	0.632/16.053
27-252	.105/2.66	0.200/5.09	0.144/3.67	0.632/16.053
27-253	.085/2.15	0.200/5.09	0.144/3.67	0.632/16.053
27-254	.075/1.90	0.200/5.09	0.144/3.67	0.632/16.053
27-255	.050/1.27	0.200/5.09	0.144/3.67	0.632/16.053
27-258	.060/1.52	0.200/5.09	0.144/3.67	0.632/16.053
27-259	.090/2.29	0.200/5.09	0.144/3.67	0.632/16.053

Size 30				
Product No	M Ref. inch/mm	A inch/mm	B inch/mm	L inch/mm
30-250	.125/3.17	0.221/5.62	0.160/4.06	0.632/16.053
30-251	.090/2.28	0.221/5.62	0.160/4.06	0.632/16.053
30-252	.105/2.66	0.221/5.62	0.160/4.06	0.632/16.053
30-253	.070/1.77	0.221/5.62	0.160/4.06	0.632/16.053
30-254	.055/1.39	0.221/5.62	0.160/4.06	0.632/16.053
30-255	.043/1.09	0.221/5.62	0.160/4.06	0.632/16.053
30-256	.080/2.03	0.221/5.62	0.160/4.06	0.632/16.053
30-257	.075/1.90	0.221/5.62	0.160/4.06	0.632/16.053
30-258	.060/1.52	0.221/5.62	0.160/4.06	0.632/16.053
30-260	.065/1.65	0.221/5.62	0.160/4.06	0.632/16.053



'T' and Star Drive Systems



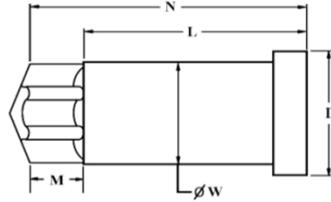
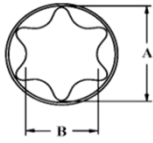
Size 40				
Product No	M Ref. inch/mm	A inch/mm	B inch/mm	L inch/mm
40-250	.135/3.42	0.267/6.78	0.192/4.89	0.760/19.304
40-251	.110/2.79	0.267/6.78	0.192/4.89	0.760/19.304
40-252	.125/3.17	0.267/6.78	0.192/4.89	0.760/19.304
40-253	.120/3.04	0.267/6.78	0.192/4.89	0.760/19.304
40-254	.097/2.46	0.267/6.78	0.192/4.89	0.760/19.304
40-255	.085/2.15	0.267/6.78	0.192/4.89	0.760/19.304
40-256	.070/1.77	0.267/6.78	0.192/4.89	0.760/19.304
40-257	.090/2.28	0.267/6.78	0.192/4.89	0.760/19.304
40-260	.080/2.03	0.267/6.78	0.192/4.89	0.760/19.304

Size 45				
Product No	M Ref. inch/mm	A inch/mm	B inch/mm	L inch/mm
45-250	.155/3.93	0.313/7.95	0.224/5.68	1.010/25.654
45-251	.115/2.92	0.313/7.95	0.224/5.68	1.010/25.654
45-252	.140/3.55	0.313/7.95	0.224/5.68	1.010/25.654
45-253	.110/2.79	0.313/7.95	0.224/5.68	1.010/25.654
45-254	.085/2.15	0.313/7.95	0.224/5.68	1.010/25.654
45-256	1.05/2.66	0.313/7.95	0.224/5.68	1.010/25.654

Size 50				
Product No	M Ref. inch/mm	A inch/mm	B inch/mm	L inch/mm
50-250	.154/3.91	0.353/8.96	0.256/6.50	1.010/25.654
50-251	.135/3.42	0.353/8.96	0.256/6.50	1.010/25.654
50-252	.160/4.06	0.353/8.96	0.256/6.50	1.010/25.654
50-253	.095/2.41	0.353/8.96	0.256/6.50	1.010/25.654
50-255	.176/4.47	0.353/8.96	0.256/6.50	1.010/25.654
50-256	.129/3.27	0.353/8.96	0.256/6.50	1.010/25.654
50-257	.110/2.79	0.353/8.96	0.256/6.50	1.010/25.654
50-258	.143/3.63	0.353/8.96	0.256/6.50	1.010/25.654
50-259	.120/3.04	0.353/8.96	0.256/6.50	1.010/25.654



'T' and Star Drive Systems



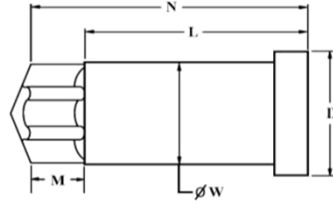
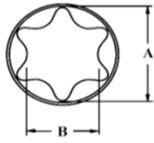
Size 55				
Product No	M Ref. inch/mm	A inch/mm	B inch/mm	L inch/mm
55-250	.215/5.46	0.447/11.35	0.318/8.09	1.010/25.654
55-251	.110/2.79	0.447/11.35	0.318/8.09	1.010/25.654
55-252	.200/5.08	0.447/11.35	0.318/8.09	1.010/25.654
55-253	.145/3.68	0.447/11.35	0.318/8.09	1.010/25.654
55-254	.175/4.44	0.447/11.35	0.318/8.09	1.010/25.654
55-255	.095/2.41	0.447/11.35	0.318/8.09	1.010/25.654
55-256	.155/3.93	0.447/11.35	0.318/8.09	1.010/25.654
55-257	.135/3.42	0.447/11.35	0.318/8.09	1.010/25.654
55-258	.115/2.92	0.447/11.35	0.318/8.09	1.010/25.654
55-259	.190/4.82	0.447/11.35	0.318/8.09	1.010/25.654

Size 60				
Product No	M Ref. inch/mm	A inch/mm	B inch/mm	L inch/mm
60-250	.280/7.12	0.529/13.44	0.381/9.68	1.010/25.654
60-251	.145/3.68	0.529/13.44	0.381/9.68	1.010/25.654
60-252	.245/6.22	0.529/13.44	0.381/9.68	1.010/25.654
60-253	.215/5.46	0.529/13.44	0.381/9.68	1.010/25.654
60-254	.185/4.69	0.529/13.44	0.381/9.68	1.010/25.654
60-256	.150/3.81	0.529/13.44	0.381/9.68	1.010/25.654
60-257	.221/5.61	0.529/13.44	0.381/9.68	1.010/25.654

Size 70				
Product No	M Ref. inch/mm	A inch/mm	B inch/mm	L inch/mm
70-250	.320/8.12	0.619/15.72	0.443/11.25	1.510/38.354
70-251	.240/6.09	0.619/15.72	0.443/11.25	1.510/38.354
70-252	.280/7.11	0.619/15.72	0.443/11.25	1.510/38.354
70-255	.174/4.42	0.619/15.72	0.443/11.25	1.510/38.354
70-256	.261/6.62	0.619/15.72	0.443/11.25	1.510/38.354



'T' and Star Drive Systems



Size 80				
Product No	M Ref. inch/mm	A inch/mm	B inch/mm	L inch/mm
80-250	.370/9.39	0.700/17.78	0.508/12.90	1.510/38.354
80-251	.315/8.00	0.700/17.78	0.508/12.90	1.510/38.354
80-254	.202/5.13	0.700/17.78	0.508/12.90	1.510/38.354
80-255	.300/7.62	0.700/17.78	0.508/12.90	1.510/38.354

Size 90				
Product No	M Ref. inch/mm	A inch/mm	B inch/mm	L inch/mm
90-250	.380/9.65	0.796/20.22	0.569/14.45	1.510/38.354
90-251	.300/7.62	0.796/20.22	0.569/14.45	1.510/38.354
90-252	.360/9.14	0.796/20.22	0.569/14.45	1.510/38.354
90-253	.240/6.09	0.796/20.22	0.569/14.45	1.510/38.354
90-255	.221/5.62	0.796/20.22	0.569/14.45	1.510/38.354
90-256	.347/8.82	0.796/20.22	0.569/14.45	1.510/38.354

Size 100				
Product No	M Ref. inch/mm	A inch/mm	B inch/mm	L inch/mm
100-250	.400/10.16	0.883/22.43	0.632/16.05	1.510/38.354
100-251	.450/11.43	0.883/22.43	0.632/16.05	1.510/38.354
100-254	.509/12.95	0.883/22.43	0.632/16.05	1.510/38.354